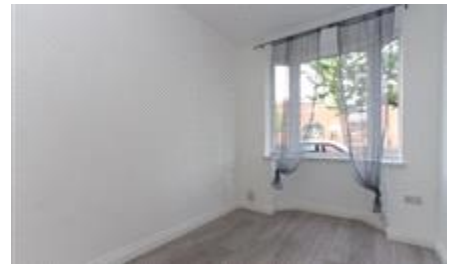




*Estate Culture Ltd*  
Lettings-Management-Sales




Harefield Road,  
Coventry  
£1,095 pcm

**3 BEDROOM PROPERTY  
AVAILABLE FROM APRIL  
2026**

- 3 BEDROOM FAMILY HOME TO RENT
- CLOSE TO LOCAL AMMENITIES
- Double Glazing
- Garden
- Gas central heating
- SUITABLE FOR FAMILIES OR PROFESIONALS
- To let unfurnished

# Energy Efficiency Rating

	Current	Potential
<p><i>Very energy efficient - lower running costs</i></p> <p>(92-100) <b>A</b></p> <p>(81-91) <b>B</b></p> <p>(69-80) <b>C</b></p> <p>(55-68) <b>D</b></p> <p>(39-54) <b>E</b></p> <p>(21-38) <b>F</b></p> <p>(1-20) <b>G</b></p> <p><i>Not energy efficient - higher running costs</i></p>		
<p><b>England &amp; Wales</b></p>	<p>EU Directive 2002/91/EC</p>	

The energy efficiency rating is a measure of the overall efficiency of a home. The higher the rating the more energy efficient the home is and the lower the fuel bills will be.

Reference

02475186161

Additional Information

RL0207

Council Tax Band: A (Coventry City Council)

Deposit: £1,260

Holding Deposit: £250

Garden details: Private Garden

Whilst every effort is made to ensure the accuracy of these details, it should be noted that the measurements are approximate only. Floorplans are for representation purposes only and prepared according to the RICS Code of Measuring Practice by our floorplan provider. Therefore, the layout of doors, windows and rooms are approximate and should be regarded as such by any prospective tenant.